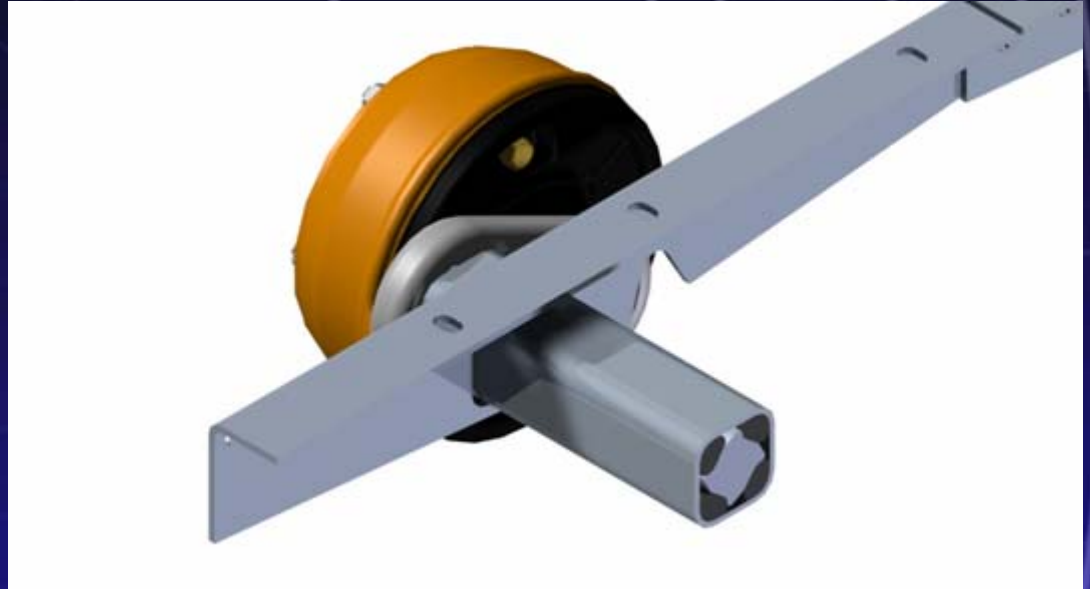
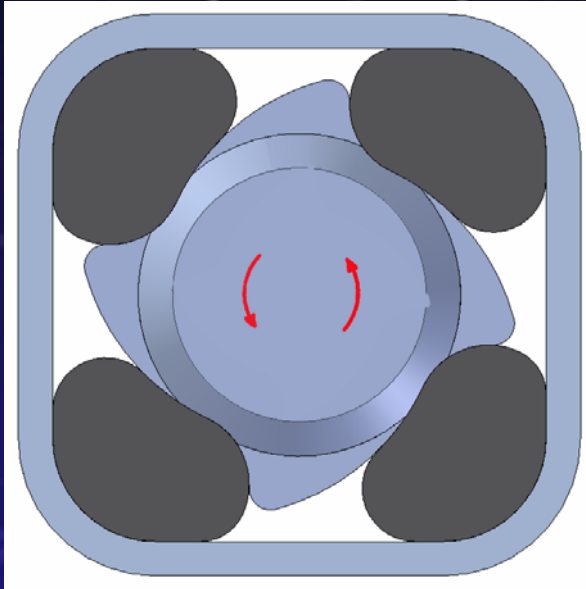


“SOFRIDE”

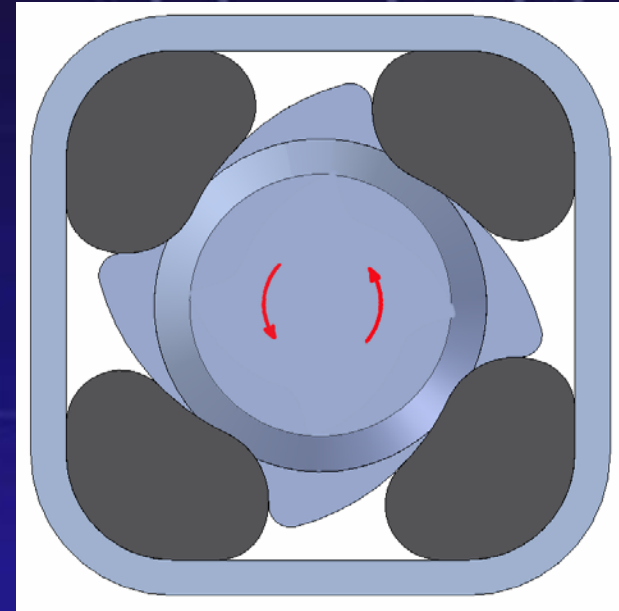


- Axles are available in Standard or “Softride” options.
- Standard suspension gives 22 ½ degree movement from unladen to laden. “Softride” suspension gives 28 degree movement from unladen to laden.
- Special involute “S” shaped solid inner member for smoother compression giving a more even suspension travel, laden & unladen.
- Progressive suspension deflection.
- Axle beams 66 & 77mm – less steel used in manufacture and thus a lighter axle.

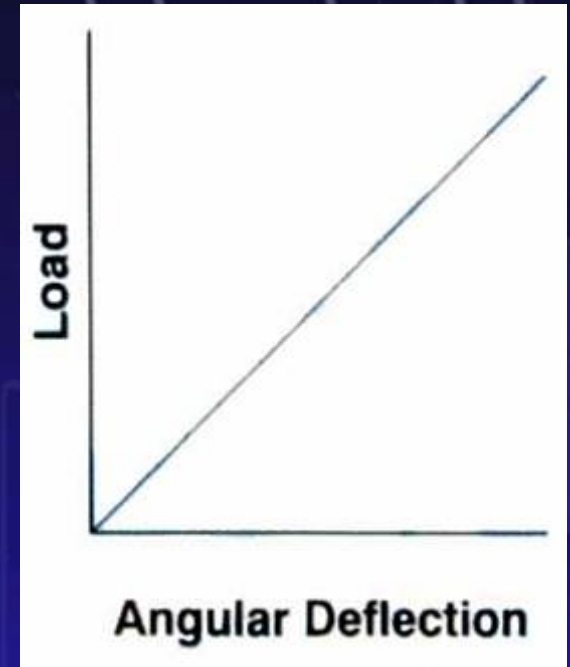
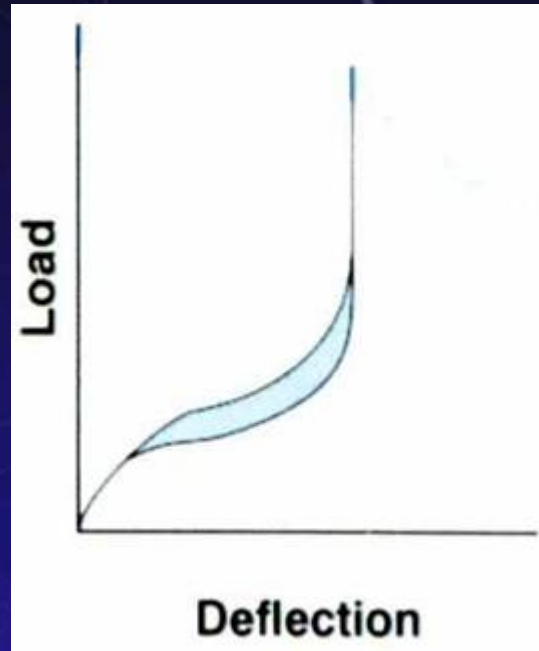
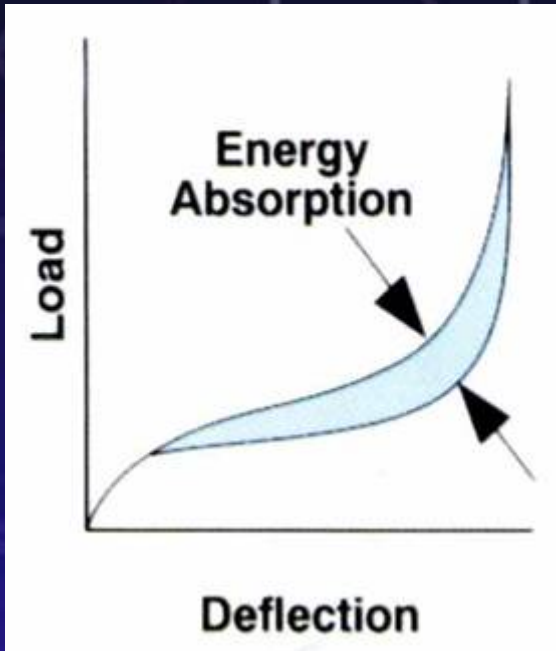
Additional Advantages of the Knott-Avonride "Softride" Axle

How is the superior ride achieved?

- Specially shaped inner member.
- Closely controlled inner radii of axle tube to permit smoother movement of axle rubbers.
- Resulting in smoother suspension travel, laden & unladen.
- The suspension travel is progressive.
- Effective suspension movement is 42.5 degrees against standard suspension movement of 35 degrees.
- Excellent damping characteristics with less trailer bounce when towing unladen.
- Can be used with shorter, lighter suspension arm.



The Comparisons



SOFRIDE

Rubber compression axle

CONVENTIONAL

Rubber compression axle

LEAF SPRING

Beam axle

