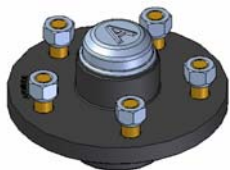
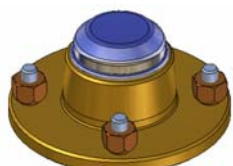


DRUMS & HUBS

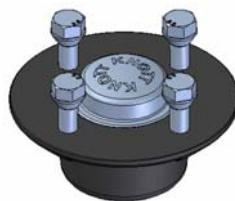
UNBRAKED



**AVONRIDE
E SERIES
(1)**



**AVONRIDE
N SERIES
(2)**



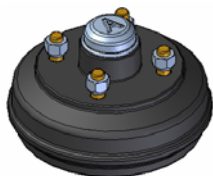
**AVONRIDE
P SERIES
&
KNOTT
SFL BEARING
(3)**



**KNOTT
TPR BEARING
(4)**

No	Part Number	Stud Pattern	Wheel Stud	Wheel Nut	Wheel Bolt	Bearing	Grease Cap	Hub Nut
1	HUBAE001	4 x 100 - M12	574003	574004				
	HUBAE002	4 x 4" - 3/8" UNF	574002	574000	N/A	571001 Inc. OSEAL	573002 (47mm)	574008 (M20)
	HUBAE003	4 x 4" - M12	574003	574004				
	HUBAE004	5 x 112 - M12	574003	574004				
2	HUBAN002	4 x 4" - 3/8" UNF	574002	574000	N/A	571003 Inc. OSEAL	573006 (50mm)	574007 (5/8 UNF)
3	520136	4 x 100 - M12	N/A	N/A	574015 *	571005 (64mm OD)	573004 (64mm)	574014 (M24)
	520138	5 x 112 - M12			574016 **			
4	520131	4 x 100 - M12	N/A	N/A	574015 * 574016 **	30204A 30206A	6B0277.003 (47mm)	6X0935.015 (M18)

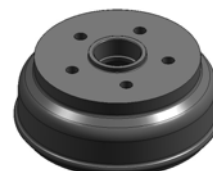
BRAKED 160X35



**AVONRIDE
C SERIES
(1)**



**KNOTT
SFL BEARING
(2)**



**KNOTT
TPR BEARING
(3)**

No	Part Number	Stud Pattern	Wheel Stud	Wheel Nut	Wheel Bolt	Bearing	Grease Cap	Hub Nut
1	HUBAC002	4 x 4" - 3/8" UNF	574002	574000				
	HUBAC001	4 x 100 - M12	574003	574004	N/A	571001 Inc. OSEAL	573002 (47mm)	574008 (M20)
	HUBAC004	5 x 112 - M12	574003	574004				
2	409697B002	4 x 100 - M12	N/A	N/A	574015 * 574016 **	571005 (64mm OD)	573005 (52mm)	574014 (M24)
	409697C002	5 x 112 - M12						
3	520128	4 x 100 - M12	N/A	N/A	574015 * 574016 **	30204A 30206A	42191 (48mm)	D937.003 (M20)
	520129	5 x 112 - M12						
	520130	4 x 5 1/2" - M12						

* Conical / ** Spherical

TPR = Taper Roller / SFL = Sealed For Life

Hub Kits Comprise Hub, Bearing(s), Grease Cap and Flange or Castle Nut
(Washer and Split Pin included for Tapered Bearings)

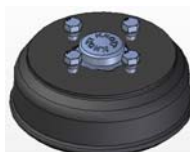
BRAKED 200X50 / 203X40



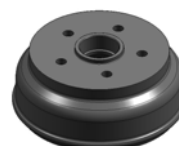
**AVONRIDE
A SERIES
(1)**



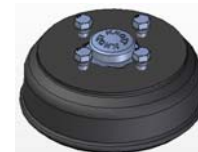
**AVONRIDE
R SERIES
(2)**



**KNOTT & AVONRIDE
SFL BEARING
X SERIES
(3)**



**KNOTT
TPR BEARING
(4)**



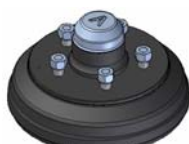
**KNOTT
SFL BEARING HD
(5)**

No	Part Number	Stud Pattern	Wheel Stud	Wheel Nut	Wheel Bolt	Bearing	Grease Cap	Hub Nut
1	HUBAA011	4 x 100 - M12	574003	574004				
	HUBAA022	4 x 4" - 3/8" UNF	574002	574000				
	HUBAA018	4 x 5 1/2" - M12	574003	574004				
	HUBAA019	5 x 6" - M12	574003	574004	N/A	571002	573002 (47mm)	574008 (M20)
	HUBAA021	5 x 6 1/2" - M16	STUD002 2000 >	574010		Inc. OSEAL		
	HUBAA021	5 x 6 1/2" - M16	574013 < 2000	574010				
2	HUBAR005	4 x 5 1/2" - M12	574003	574004	N/A	571004	573001 (60mm)	574008 (M20)
	HUBAR006	5 x 112 - M12	574003	574004		Inc. OSEAL		
3	HUBAX011	4 x 100 - M12			574015 *	571005	573004 (64mm)	574014 (M24)
	HUBAX012	4 x 5 1/2" - M12	N/A	N/A	574016 **	(64mm OD)		
	HUBAX013	5 x 112 - M12						
4	520124	4 x 100 - M12			574015 *	30205A	573005 (52mm)	574006 (M24)
	520125	5 x 112 - M12	N/A	N/A	574016 **	30206A		
	520127	4 x 5 1/2" - M12						
5	28744B02	4 x 100 - M12			574015 *	571006	573005 (52mm)	574014 (M24)
	28744C02	5 x 112 - M12	N/A	N/A	574016 **	(72mm OD)		

BRAKED 250X40



**AVONRIDE
T SERIES
(1)**



**AVONRIDE
V SERIES
(2)**



**AVONRIDE
Y SERIES
&
KNOTT
SFL BEARING
(3)**

No	Part Number	Stud Pattern	Wheel Stud	Wheel Nut	Wheel Bolt	Bearing	Grease Cap	Hub Nut
1	HUBAT002	5 x 152.4 - M12	574003	574004				
	HUBAT006	5 x 140 - M16	STUD002	574010*	N/A	571000	573003 (74.5mm)	574006 (M24)
	HUBAT004	5 x 165.1 - M16	STUD002	574011**		Inc. OSEAL		
2	HUBAV003	5 x 165.1 - M16	STUD002	574010*		571000	573003 (74.5mm)	574006 (M24)
	HUBAV002	5 x 140 - M16	STUD002	574011**	N/A	Inc. OSEAL		
3	HUBAY011	5 x 165.1 - M16			574015 *	571006	573005 (52mm)	574014 (M24)
	HUBAY008	5 X 112 - M12	STUD002	574010	574016 **	(72mm OD)		
	HUBAY012	4 x 139.7 - M12						

* Conical / ** Spherical

TPR = Taper Roller / SFL = Sealed For Life

Hub Kits Comprise Hub, Bearing(s), Grease Cap and Fixing Nut
(Washer and Split Pin included for Tapered Bearing Type)