

OPERATING INSTRUCTIONS

Check for correct operation as follows:

With the trailer on level ground and connected to a towing vehicle, engage the manual reverse stop (Fig. 6), reverse the trailer and then draw forward.

The stop should disengage to the stop position (Fig.5).

REPEAT THE TEST 3 TIMES

When engaged, the manual reverse stop disables the operation of the over-run braking system while the trailer is reversed. It disengages automatically when the trailer is drawn forward.

WARNING !

DO NOT ATTEMPT TO MODIFY THE MECHANISM IN ORDER TO DISABLE THE SELF-CANCELLING FUNCTION.

In all but the most extreme cases, provided that the braking system is correctly adjusted, the auto-reverse system will allow the trailer to be reversed. However, where the trailer has to be reversed uphill; particularly on loose, slippery or uneven surfaces, the trailer brakes may not release. The override stop will enable the trailer to be reversed.

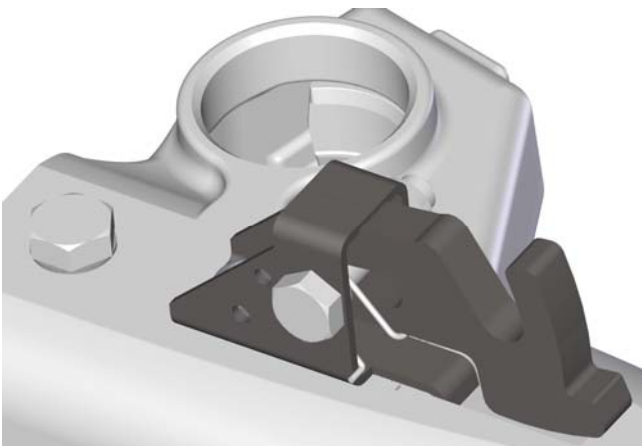


Fig.5 Manual Reverse Stop Disengaged

OPERATING INSTRUCTIONS

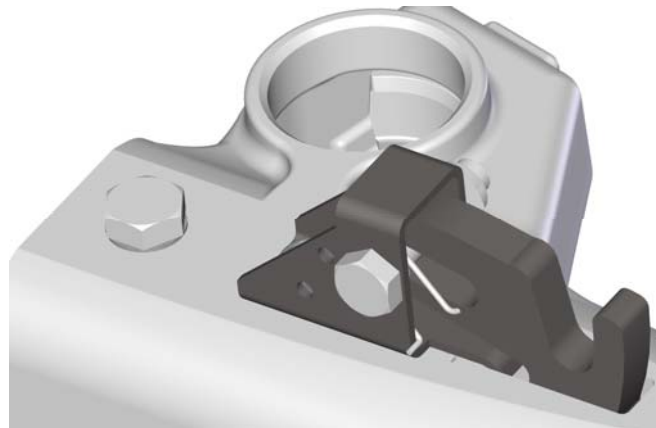


Fig.6 Manual Reverse Stop engaged

The manual reverse stop can only be engaged (Fig.6) with the coupling drawtube extended. If the drawtube is compressed it will be necessary to draw the towing vehicle forward to extend the drawtube before the stop can be engaged.

To engage, push the stop down into the slot and slide forward as show.

WARNING !

IT IS STRONGLY RECOMMENDED THAT THE REVERSE STOP IS ONLY ENGAGED WITH THE TRAILER ON LEVEL GROUND.

IF IT IS ESSENTIAL TO ENGAGE THE MANUAL REVERSE STOP WHILST THE TRAILER IS FACING DOWNHILL IT IS IMPERATIVE THAT THE FOOT BRAKE AND HANDBRAKE OF THE TOWING VEHICLE ARE APPLIED BY A SECOND PERSON.

If the trailer is facing downhill it may not be possible to extend the drawtube unless the trailer handbrake is applied prior to drawing the towing vehicle forward. After engaging the manual reverse stop, the trailer brakes will not operate and there is the possibility that the towing vehicle handbrake will not be capable of holding. Therefore the vehicle brakes must be applied by a second person (with vehicle engine running).

Release the trailer handbrake and reverse the trailer.

OPERATING INSTRUCTIONS

The manual reverse stop will not disengage until the drawtube extends again. Always check that the stop has disengaged (Fig.5) if you are setting of down hill immediately following an uphill reversing manoeuvre. If the stop is still engaged it may be necessary to apply the trailer handbrake and draw forward allowing the stop to disengage.

NOTES: